

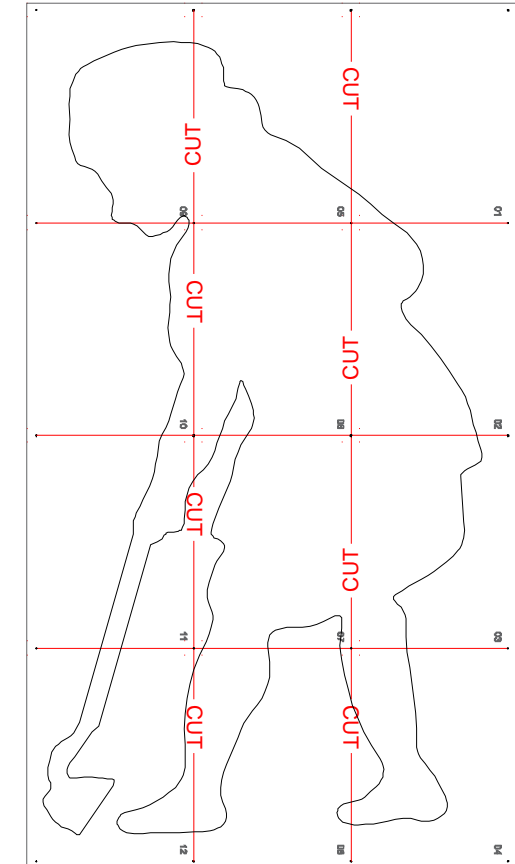
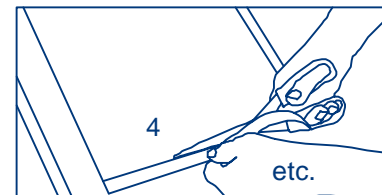
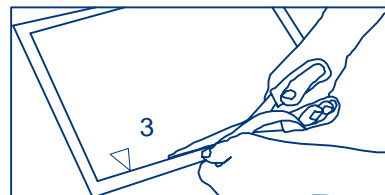
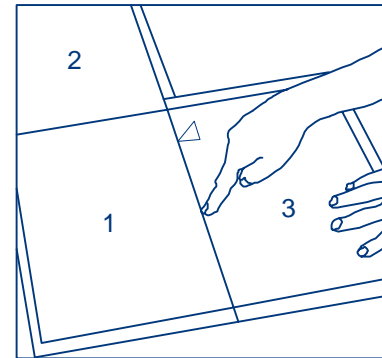
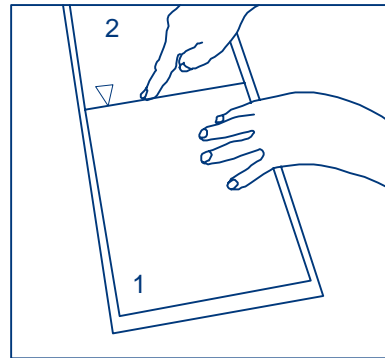
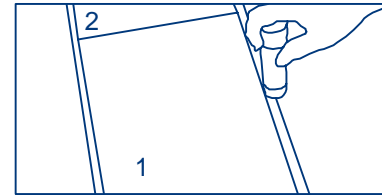
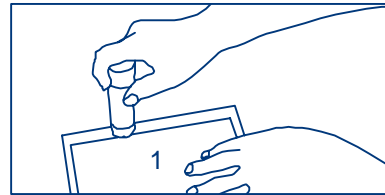
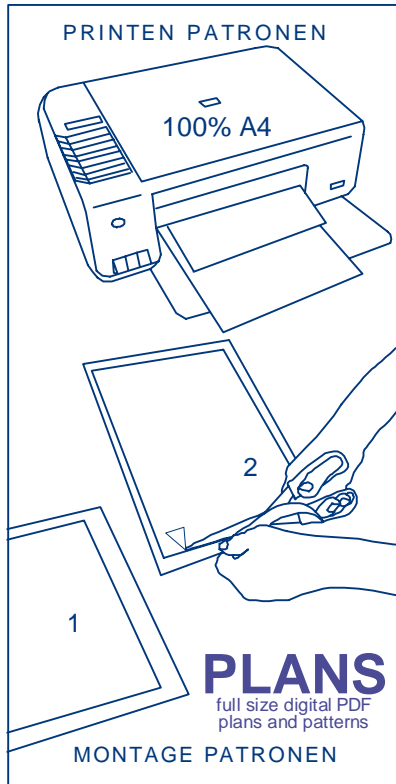
Tuin deco "SCHOFFEL"

Size. ± 105x58 cm

© L.Lammertsma

#059

ONZE PATRONEN SAMENSTELLEN ZUSEMMENSTELLEN UNSERER SCHNITTMUSTER ASSEMBLING OUR PATTERNS



Materiaal 60x120 cm

Het patroon monteren door de delen: *Afdrukken op eigen printer op A4 100%. *De linker en bovenrand volgens stippelijijn afknippen.

*De rechterrاند van nummer 1 met lijmstift insmeren en onder nummer 2 plakken tot de stippelijijn. enz

Montieren Sie das Muster durch die Teile: *Druck auf eigenem Drucker auf A4 100%. *Schneiden Sie die linke und obere Kante gemäß der gepunkteten Linie. *Die rechte Kante von Nummer 1 mit einem Klebestift bestreichen und auf Nummer 2 kleben. etc.

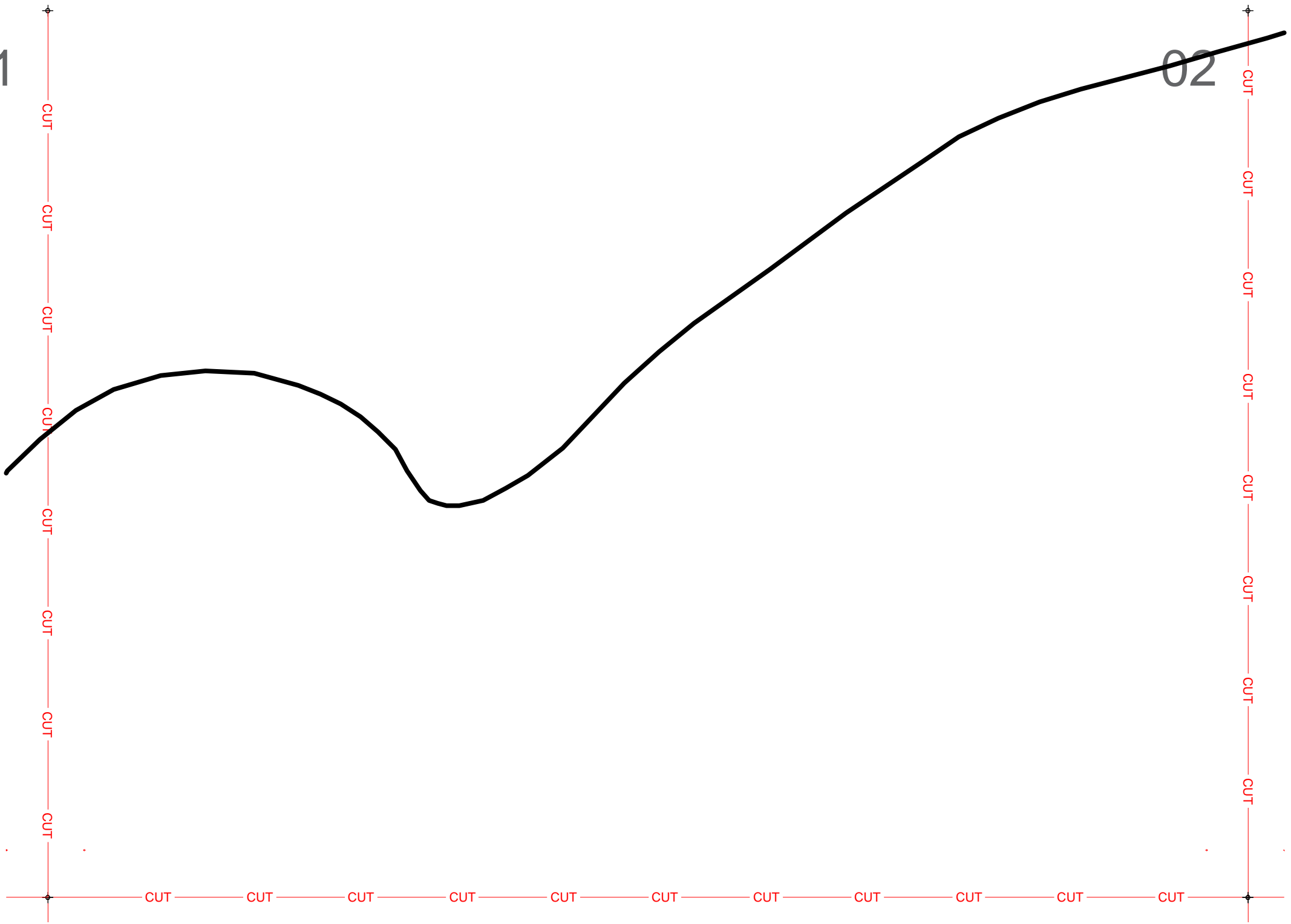
Assemble the pattern through the parts: *printing on own printer on A4 100%. *cut the left and top edge according to the dotted line.

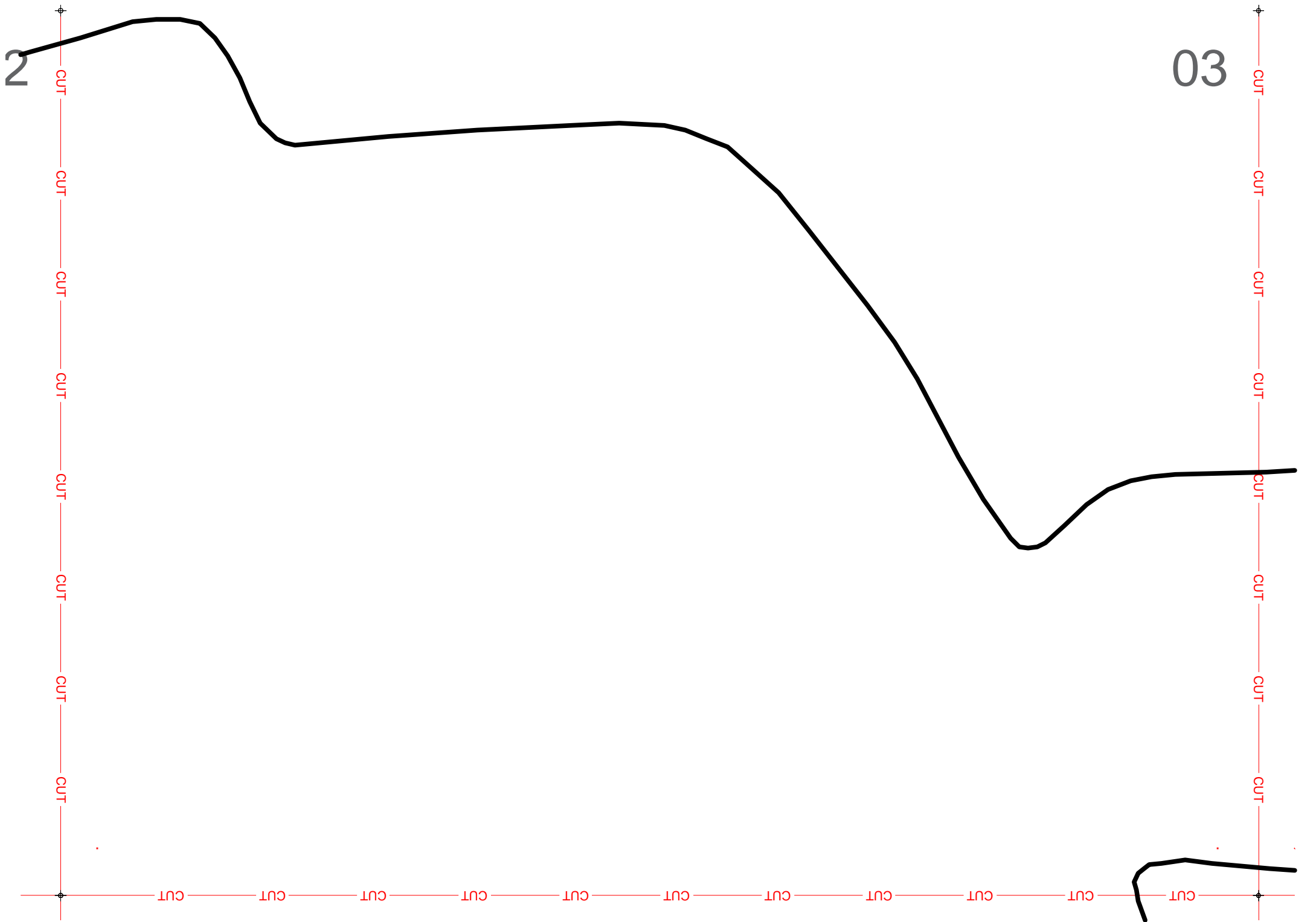
Coat the right edge of number 1 with a glue stick and stick to number 2. etc.

UITKNIPPEN EN OMTREK AFTEKENEN.
CUT OUT AND DRAW OUTLINE.
AUSSCHNEIDEN UND UMRISSE ZEICHNEN.

1

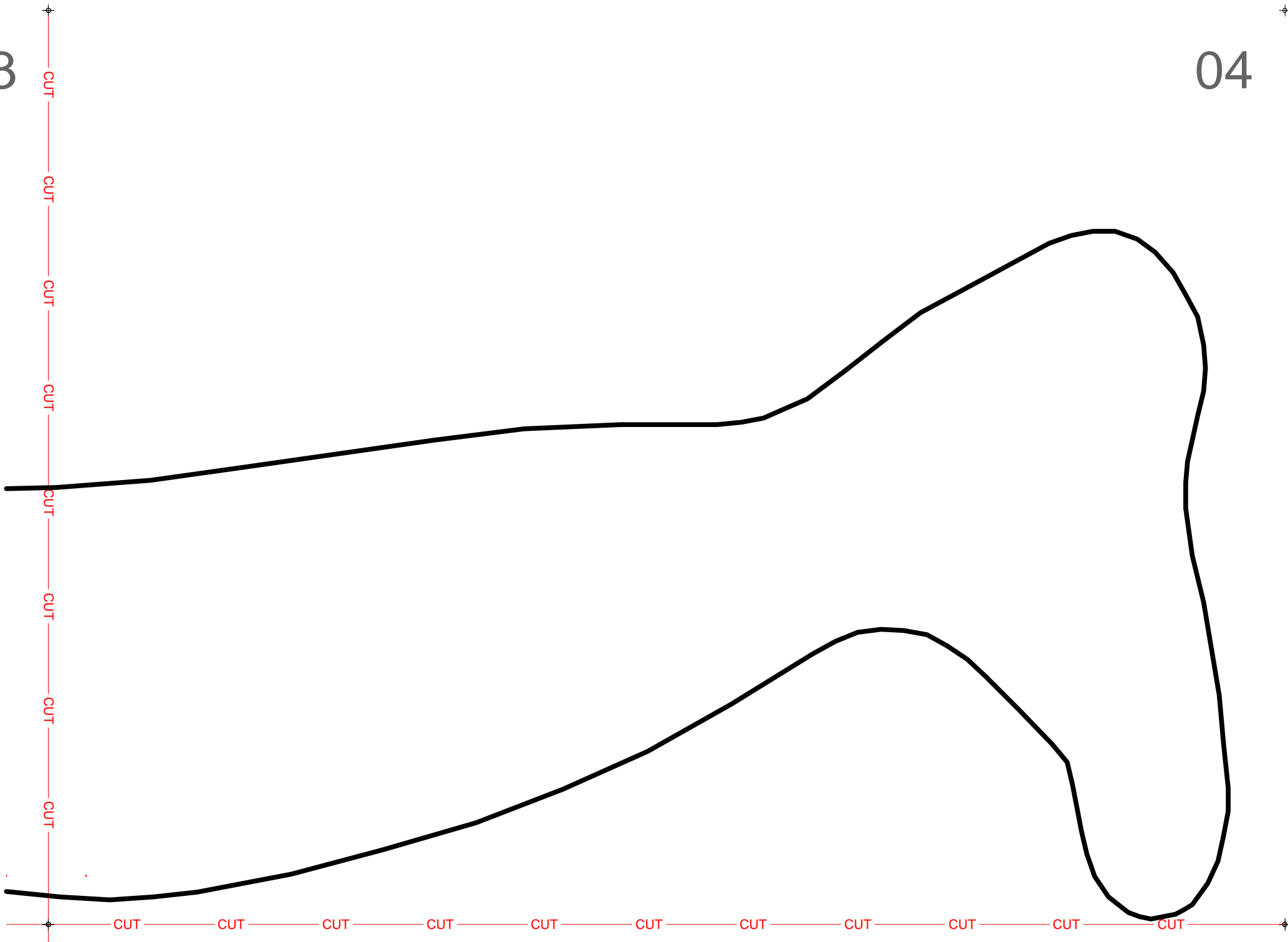
02

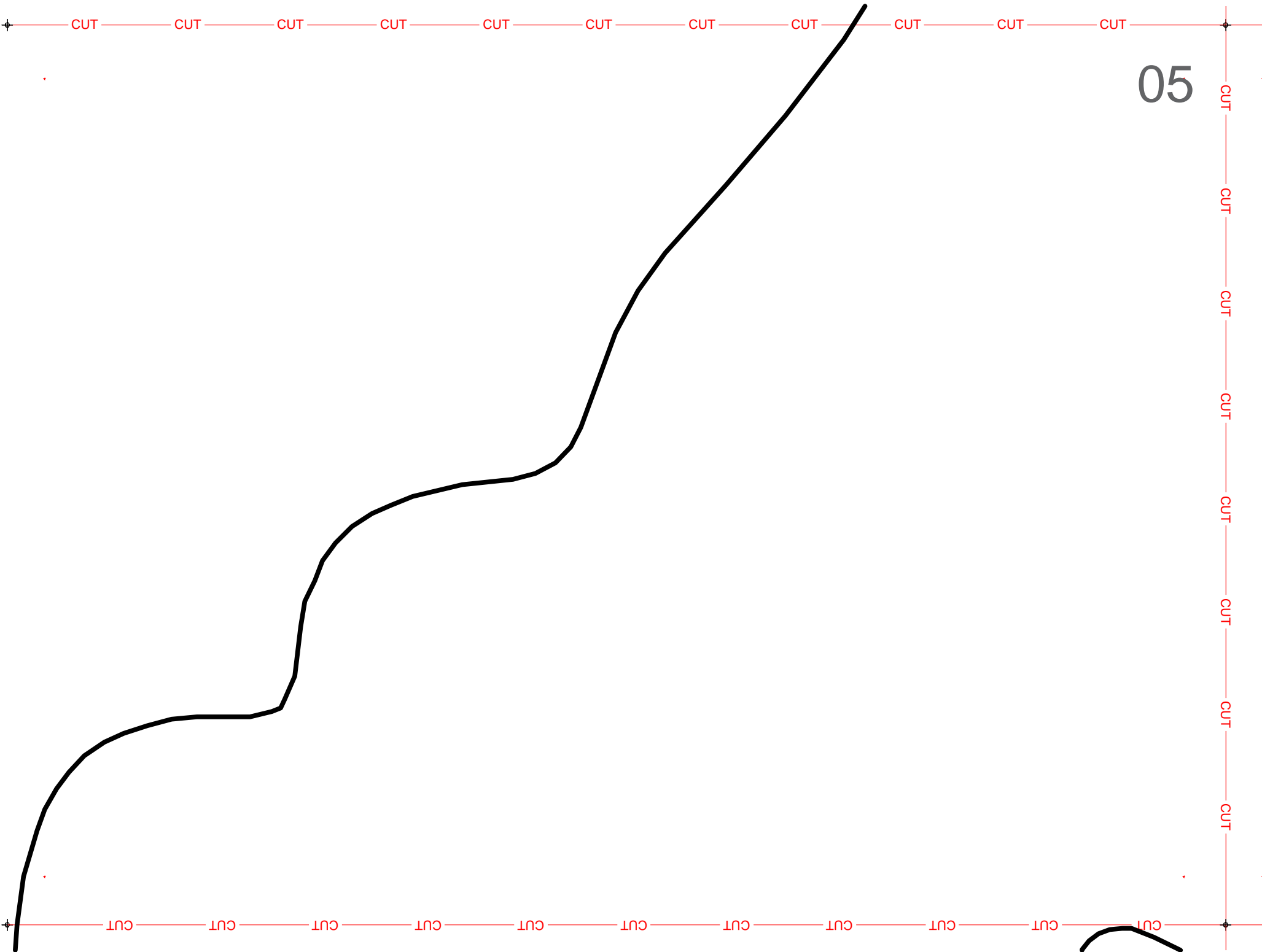




3

04





5

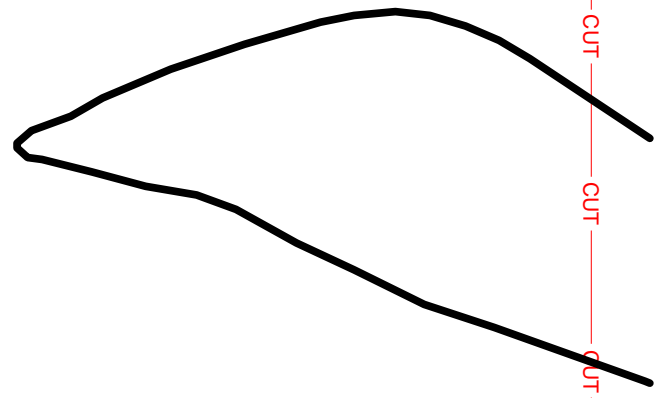
06

CUT CUT CUT CUT CUT CUT CUT CUT CUT CUT CUT

CUT CUT CUT CUT CUT CUT CUT CUT CUT CUT CUT

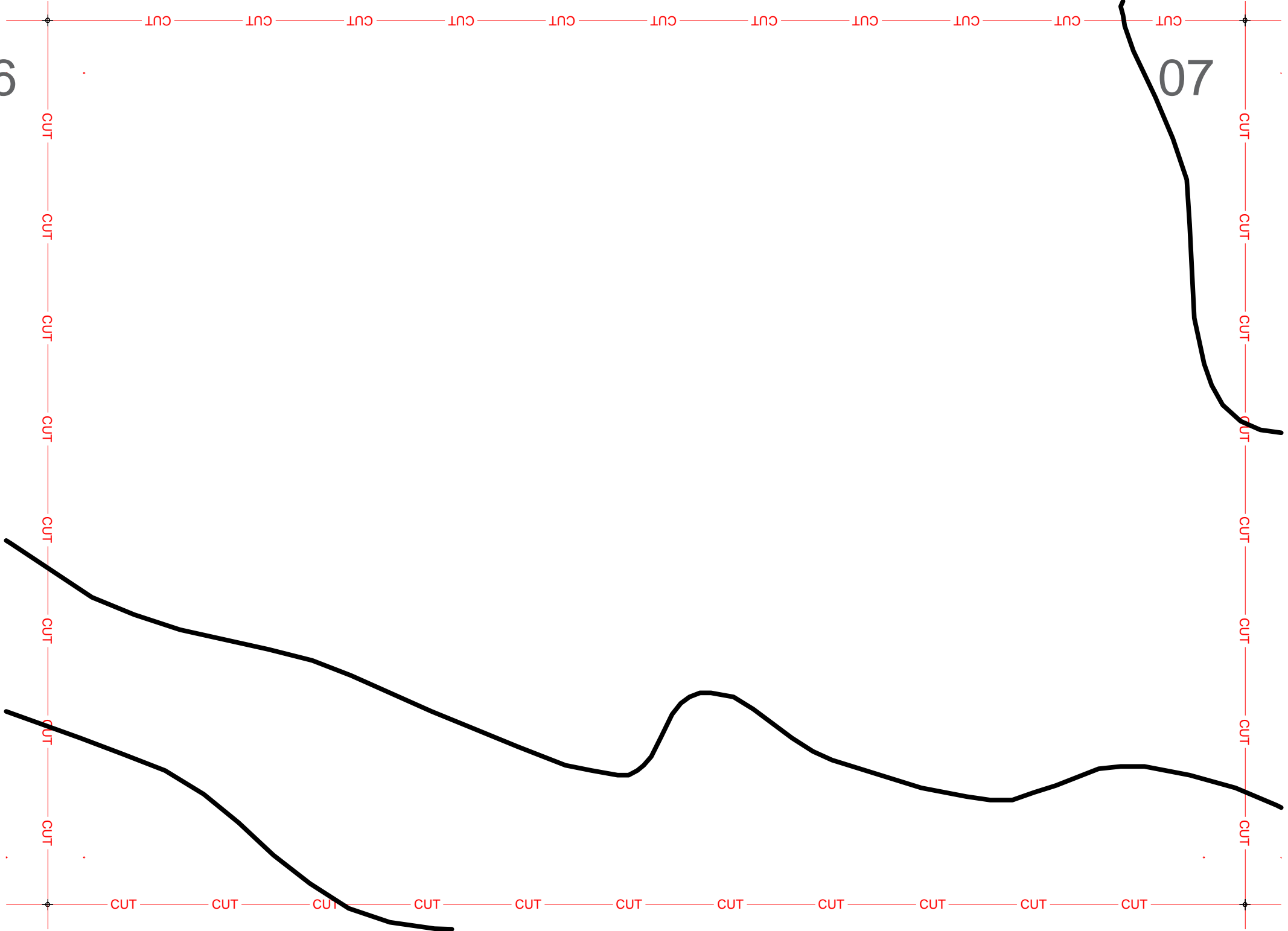
CUT CUT CUT CUT CUT CUT CUT CUT CUT CUT

CUT CUT CUT CUT CUT CUT CUT CUT CUT CUT



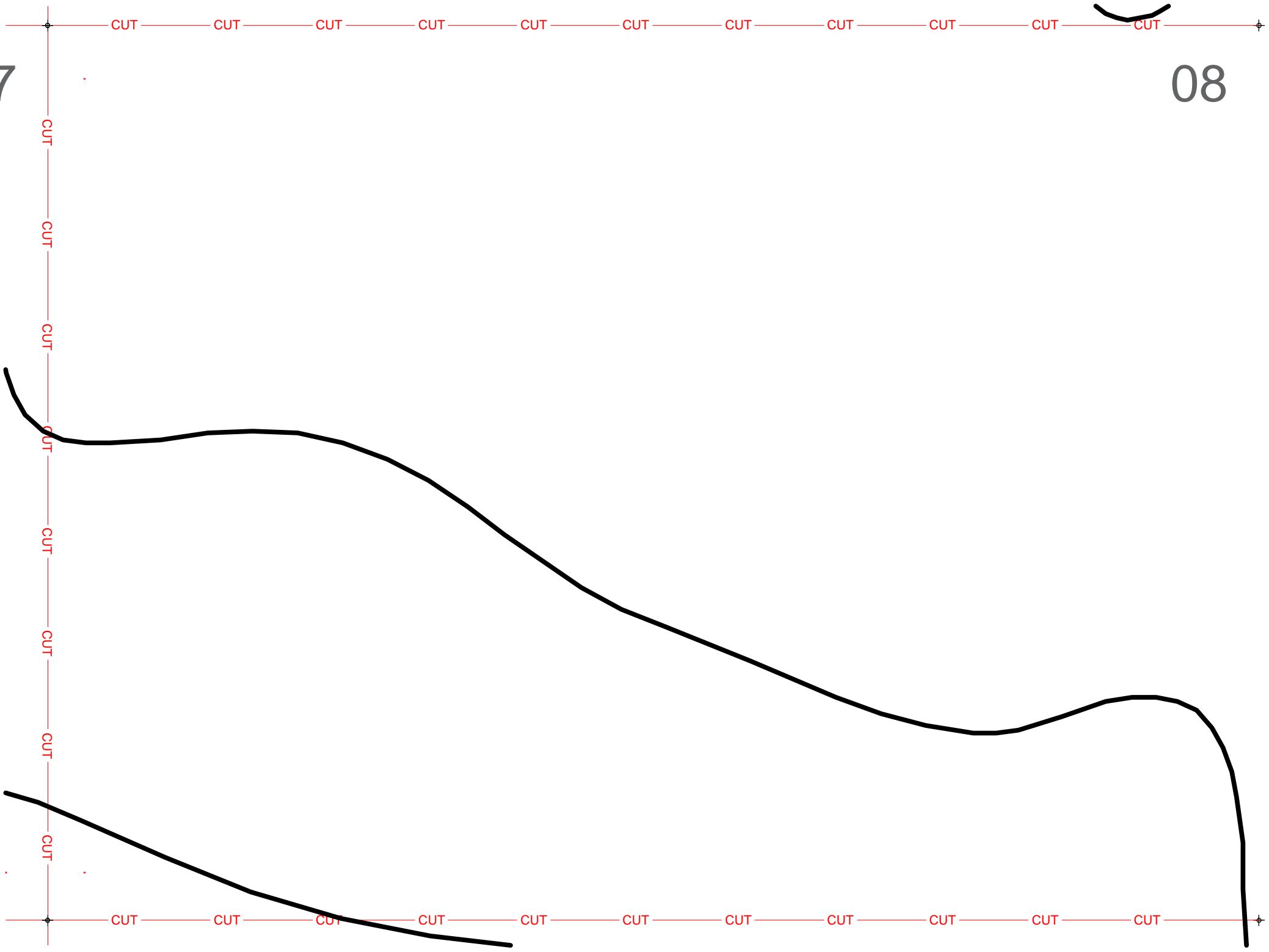
6

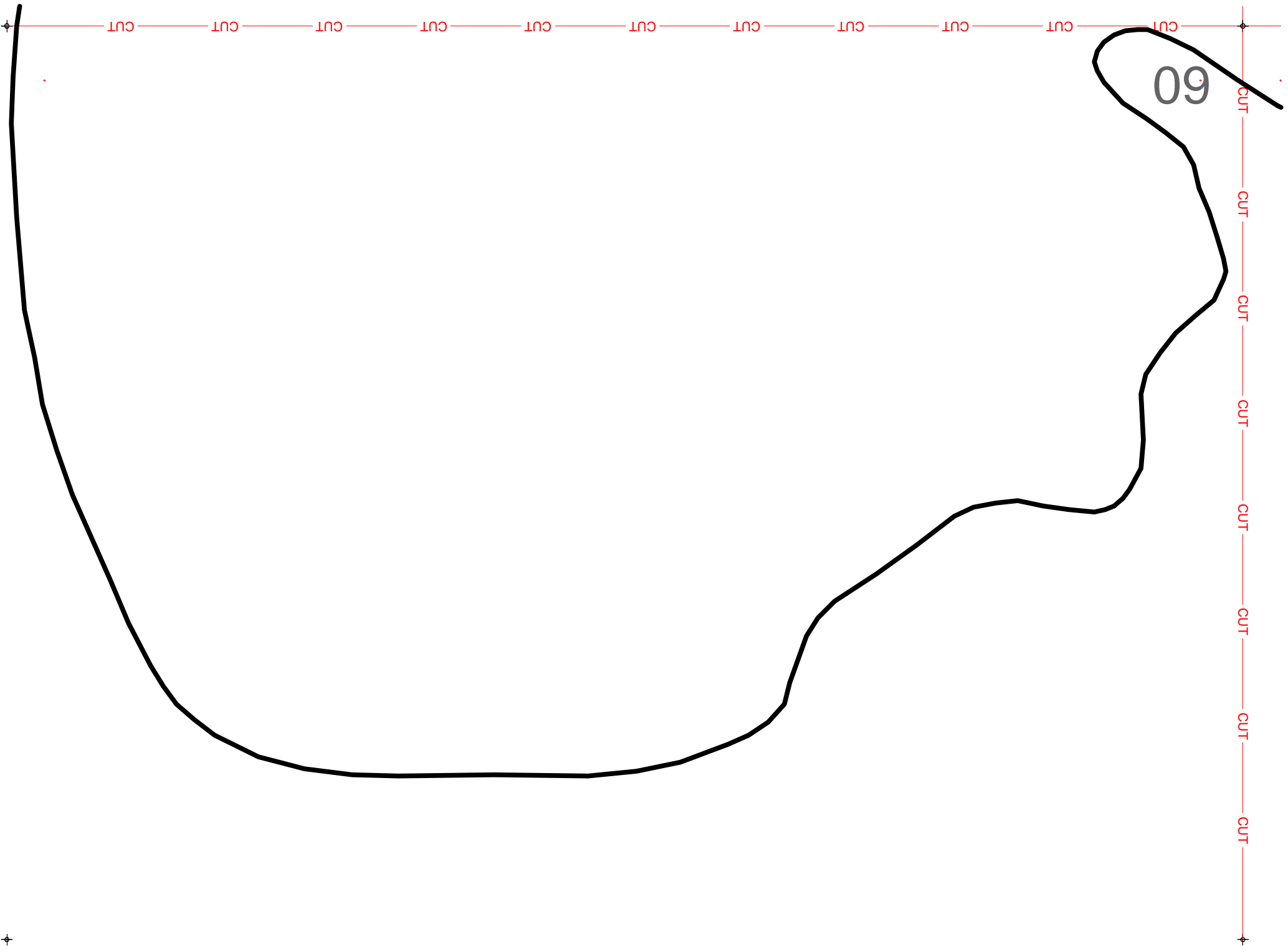
07

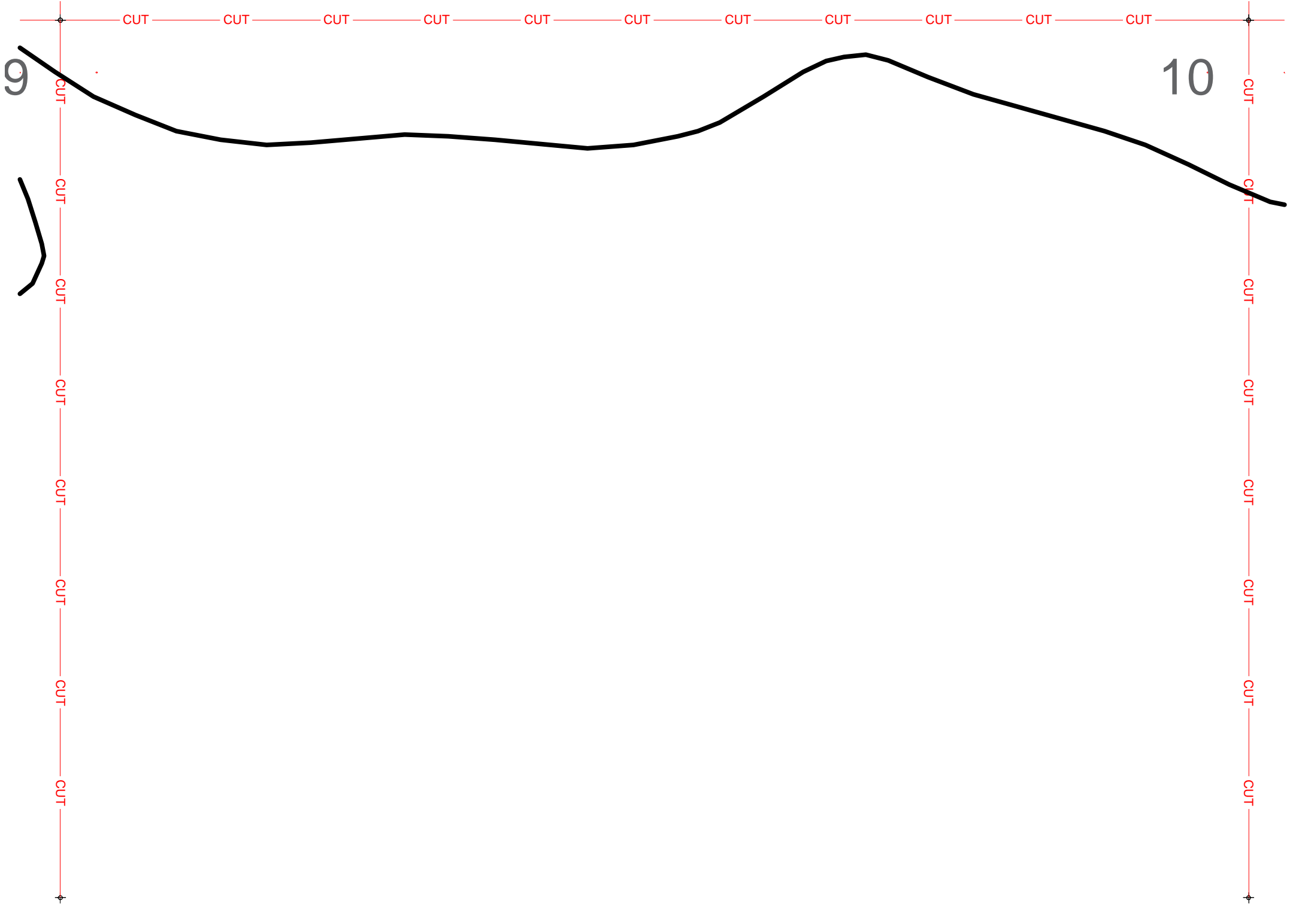


7

08

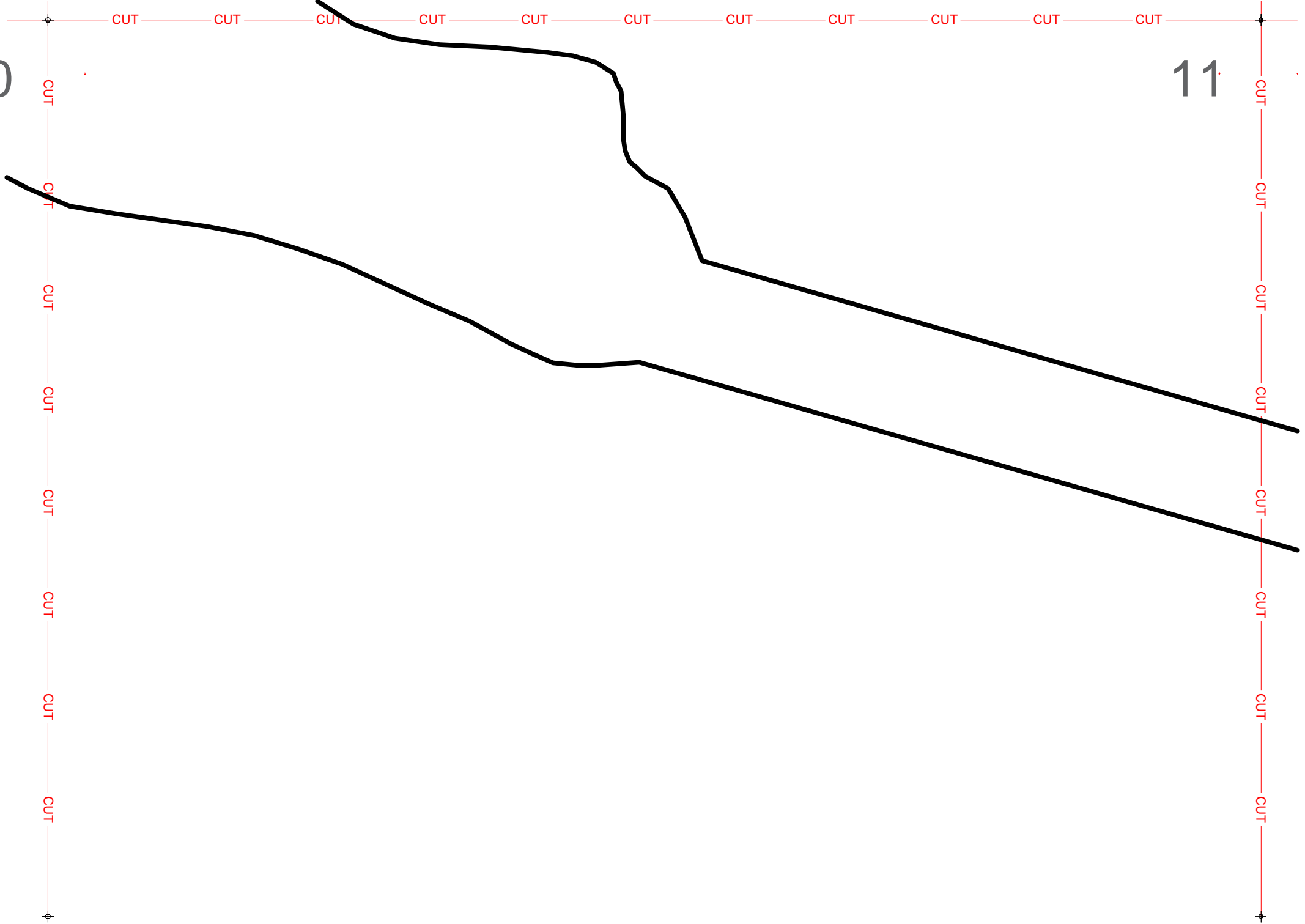






0

11



1

12

